

**DIAGRAM 7**



**MOVE TO BLACK – CHECK MATE IN TWO MOVES – THREE POINTS**

**DIAGRAM 8**



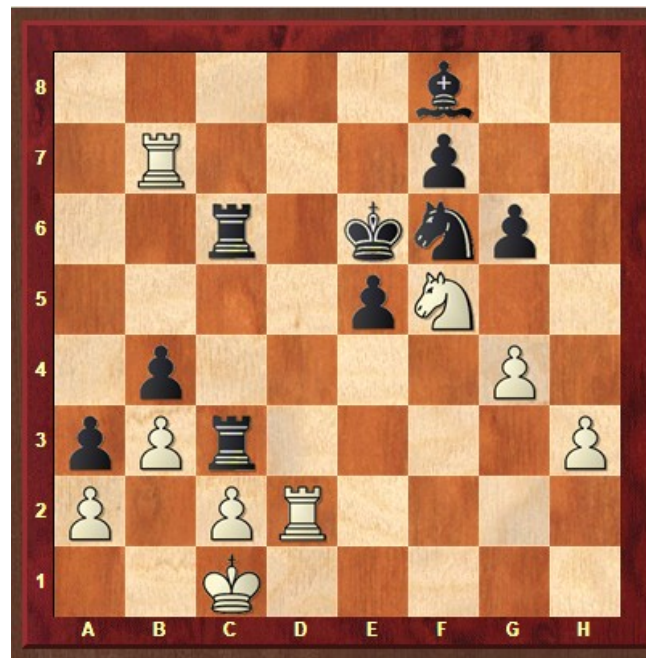
**MOVE TO WHITE – CHECK MATE IN TWO MOVES – THREE POINTS**

DIAGRAM 9



MOVE TO WHITE – CHECK MATE IN TWO MOVES – THREE POINTS

DIAGRAM 10



MOVE TO WHITE – CHECK MATE IN TWO MOVES – THREE POINTS

DIAGRAM 11



MOVE TO WHITE – CHECK MATE IN TWO MOVES – FOUR POINTS

DIAGRAM 12



MOVE TO WHITE – CHECK MATE IN TWO MOVES – FIVE POINTS